

# Concrete Colors for Integral - Hardners - Releases



*Any Color You Want*

ANY CUSTOM BLENDED COLOR INCLUDING:  
SUNSET ROSE MOCHA DUSTY ROSE CANYON ROSE  
GREEN SLATE OMAHA TAN WALNUT ASH GRAY BEDFORD BROWN  
PLUS 11 PRIMARY COLORS IN VARIOUS STRENGTHS

FOR YOUR CONVENIENCE WE HAVE PUT A USEFUL COLOR ADDITIVE CALCULATOR AT  
[WWW.CONCRETECH.COM](http://WWW.CONCRETECH.COM)

# PRIMARY CONCRETECH COLORS



PC-01 1lb. or 1%



PC-01 2lb. or 2%



PC-01 3lb. or 3%



PC-01 4lb. or 4%



PC-01 5lb. or 5%



PC-02 1lb. or 1%



PC-02 2lb. or 2%



PC-02 3lb. or 3%



PC-02 4lb. or 4%



PC-02 5lb. or 5%



PC-03 1lb. or 1%



PC-03 2lb. or 2%



PC-03 3lb. or 3%



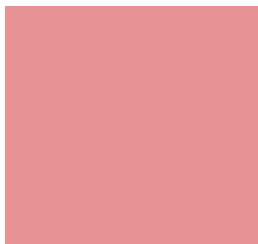
PC-03 4lb. or 4%



PC-03 5lb. or 5%



PC-04 1lb. or 1%



PC-04 2lb. or 2%



PC-04 3lb. or 3%



PC-04 4lb. or 4%



PC-04 5lb. or 5%



PC-05 1lb. or 1%



PC-05 2lb. or 2%



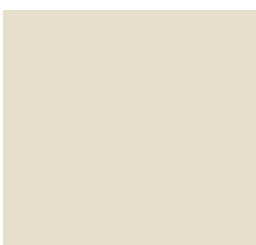
PC-05 3lb. or 3%



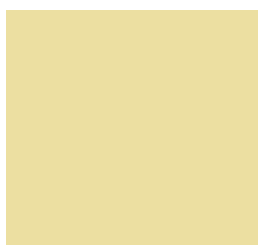
PC-05 4lb. or 4%



PC-05 5lb. or 5%



PC-06 1lb. or 1%



PC-06 2lb. or 2%



PC-06 3lb. or 3%



PC-06 4lb. or 4%



PC-06 5lb. or 5%

## PRIMARY CONCRETECH COLORS



PC-07 1lb. or 1%



PC-07 2lb. or 2%



PC-07 3lb. or 3%



PC-07 4lb. or 4%



PC-07 5lb. or 5%



PC-08 1lb. or 1%



PC-08 2lb. or 2%



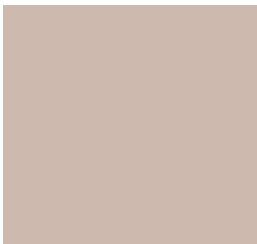
PC-08 3lb. or 3%



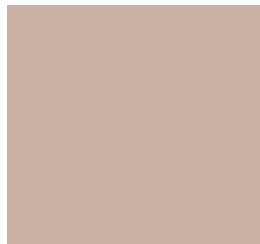
PC-08 4lb. or 4%



PC-08 5lb. or 5%



PC-09 1lb. or 1%



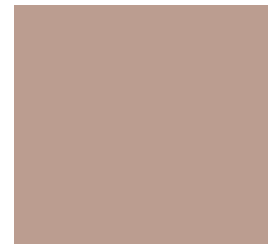
PC-09 2lb. or 2%



PC-09 3lb. or 3%



PC-09 4lb. or 4%



PC-09 5lb. or 5%



PC-10 1lb. or 1%



PC-10 2lb. or 2%



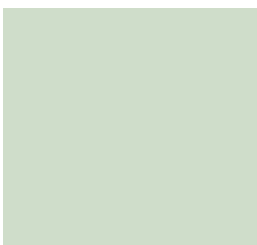
PC-10 3lb. or 3%



PC-10 4lb. or 4%



PC-10 5lb. or 5%



PC-11 1lb. or 1%



PC-11 2lb. or 2%



PC-11 3lb. or 3%



PC-11 4lb. or 4%



PC-11 5lb. or 5%

**NOTE:** Color selections on this chart approximate as closely as possible appearance of color when used on horizontal troweled and/or imprinted concrete. Variations can be expected due to job conditions, cement finishing techniques, use of sealers and slight raw material color drifts. Due to the natural source materials in cement and handcrafted nature of imprinted concrete, variations are acceptable and desirable. See Concretech Technical Bulletin before use.

Because the conditions of use and application of our products are beyond control, **Concretech Decorative Concrete Supply Ltd.** makes no warranty of fitness or merchantability for any particular purpose and expressly disclaims liability for incidental or consequential damages whether based on negligence or warranty. Buyer's sole remedy shall be the refund of color purchase price from point of purchase.

# BLENDED CONCRETECH COLORS



**Mocha**  
1lb. or 1% BC-01



**Omaha Tan**  
1lb. or 1% BC-02



**Ash Gray**  
1lb. or 1% BC-03



**Coffee Custard**  
1lb. or 1% BC-04



**Desert Tan**  
1lb. or 1% BC-05



**Earth Rose**  
2lb. or 2% BC-01



**Gothic Gold**  
2lb. or 2% BC-02



**Cobblestone**  
2lb. or 2% BC-03



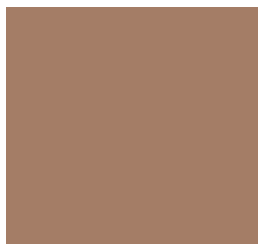
**Cocoa**  
2lb. or 2% BC-04



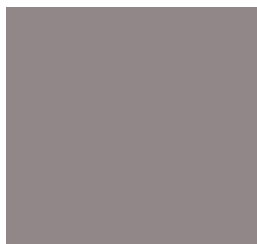
**Oakwood Brown**  
2lb. or 2% BC-05



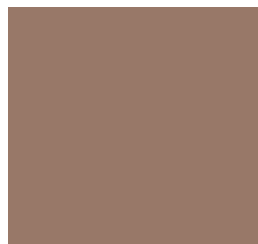
**Sunset Rose**  
1lb. or 1% BC-06



**Bedford Brown**  
1lb. or 1% BC-07



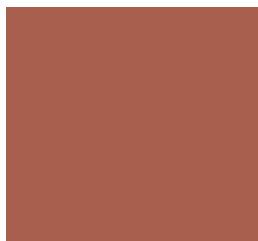
**Misty Gray**  
1lb. or 1% BC-08



**Sierra Sand**  
1lb. or 1% BC-09



**Dusty Rose**  
1lb. or 1% BC-10



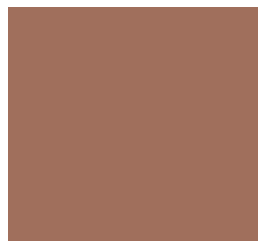
**Rustic Red**  
2lb. or 2% BC-06



**Canyon Stone**  
2lb. or 2% BC-07



**Blush**  
2lb. or 2% BC-08



**Mesa Brown**  
2lb. or 2% BC-09



**Caramel**  
2lb. or 2% BC-11



**Brick Dust**  
3lb. or 3% BC-06



**Copper Beach**  
3lb. or 3% BC-07



**Walnut**  
3lb. or 3% BC-08



**Green Slate**  
3lb. or 3% BC-12



**Strawflower**  
3lb. or 3% BC-11

## Calculations for adding integral color to your mix.

### To obtain the best results:

1. Determine the amount of cement in your mix. (Ask your dispatcher)
2. Choose the color from the Concretech color chart.
3. Use the percentage number from the chart for the calculation.
4. Multiply the cement weight by color %, this equals the total weight of color needed

### Examples:

**Calculating in Metric:** You have one (1) meter of concrete with 320kg of cement and you want Strawflower which is 3% of Concretech BC-11.  
 $320\text{kg} \times 2.2 \text{ (lbs per kg)} = 704\text{lbs cement}$ .  $704\text{lbs} \times 3\% = 21\text{lbs of Strawflower BC-11}$ .

**Calculating in U.S.:** You have 5 yards of concrete with 660lbs cement per yard and want Strawflower.  $5 \text{ (yards)} \times 660 \text{ (lbs per yard)} = 3300\text{lbs}$ .  
 $\text{Multiply } 3300 \times 3\% = 99\text{lbs of Concretech BC-11}$ .

**Note:** Cement material defined as the total of portland cement, fly ash, silica fume, lime and other cementitious materials but does not include aggregate or sand.

# Select Grade™ Integral Color



**BROWN**  
1 BAG PER 2 YARDS



**EARTH BROWN**  
ADD 1 BAG OF BROWN  
TO 1 YARD



**TOASTED BROWN**  
ADD 2 BAGS OF BROWN  
TO 1 YARD



**CHINCHILLA BROWN**  
ADD 3 BAGS OF BROWN  
TO 1 YARD



**CORAL**  
1 BAG PER 2 YARDS



**RED CORAL**  
ADD 1 BAG OF CORAL  
TO 1 YARD



**CRIMSON CORAL**  
ADD 2 BAGS OF CORAL  
TO 1 YARD



**FIERY CORAL**  
ADD 3 BAGS OF CORAL  
TO 1 YARD



**STONE**  
1 BAG PER 2 YARDS



**RIVER STONE**  
ADD 1 BAG OF STONE  
TO 1 YARD



**QUARTZ STONE**  
ADD 2 BAGS OF STONE  
TO 1 YARD



**CLIFF STONE**  
ADD 3 BAGS OF STONE  
TO 1 YARD



**CLAY**  
1 BAG PER 2 YARDS



**ARID CLAY**  
ADD 1 BAG OF CLAY  
TO 1 YARD



**BAKED CLAY**  
ADD 2 BAGS OF CLAY  
TO 1 YARD



**UTAH CLAY**  
ADD 3 BAGS OF CLAY  
TO 1 YARD



**BARK**  
1 BAG PER 2 YARDS



**WISTERIA BARK**  
ADD 1 BAG OF BARK  
TO 1 YARD



**HICKORY BARK**  
ADD 2 BAGS OF BARK  
TO 1 YARD



**MAHOGANY BARK**  
ADD 3 BAGS OF BARK  
TO 1 YARD



**BUFF**  
1 BAG PER 2 YARDS



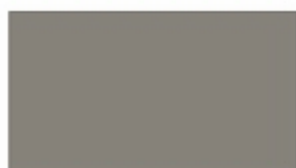
**HONEY BUFF**  
ADD 1 BAG OF BUFF  
TO 1 YARD



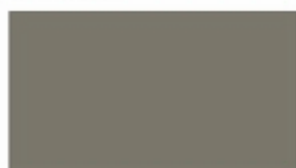
**GOLDEN BUFF**  
ADD 2 BAGS OF BUFF  
TO 1 YARD



**MUSTARD BUFF**  
ADD 3 BAGS OF BUFF  
TO 1 YARD



**GRAY**  
1 BAG PER 2 YARDS



**GAUNTLET GRAY**  
ADD 1 BAG OF GRAY  
TO 1 YARD



**FOX GRAY**  
ADD 2 BAGS OF GRAY  
TO 1 YARD



**HEMATITE GRAY**  
ADD 3 BAGS OF GRAY  
TO 1 YARD