



**SG01 BROWN**  
1 BAG PER 2 YARDS



**EARTH BROWN**  
ADD 1 BAG OF BROWN TO 1 YARD



**TOASTED BROWN**  
ADD 2 BAGS OF BROWN TO 1 YARD



**CHINCHILLA BROWN**  
ADD 3 BAGS OF BROWN TO 1 YARD



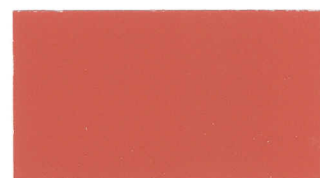
**SG02 CORAL**  
1 BAG PER 2 YARDS



**RED CORAL**  
ADD 1 BAG OF CORAL TO 1 YARD



**CRIMSON CORAL**  
ADD 2 BAGS OF CORAL TO 1 YARD



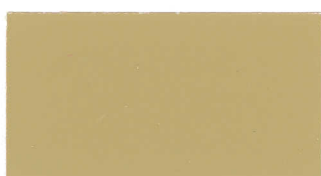
**FIERY CORAL**  
ADD 3 BAGS OF CORAL TO 1 YARD



**SG03 STONE**  
1 BAG PER 2 YARDS



**RIVER STONE**  
ADD 1 BAG OF STONE TO 1 YARD



**QUARTZ STONE**  
ADD 2 BAGS OF STONE TO 1 YARD



**CLIFF STONE**  
ADD 3 BAGS OF STONE TO 1 YARD



**SG04 CLAY**  
1 BAG PER 2 YARDS



**ARID CLAY**  
ADD 1 BAG OF CLAY TO 1 YARD



**BAKED CLAY**  
ADD 2 BAGS OF CLAY TO 1 YARD



**UTAH CLAY**  
ADD 3 BAGS OF CLAY TO 1 YARD



**SG05 BARK**  
1 BAG PER 2 YARDS



**WISTERIA BARK**  
ADD 1 BAG OF BARK TO 1 YARD



**HICKORY BARK**  
ADD 2 BAGS OF BARK TO 1 YARD



**MAHOGANY BARK**  
ADD 3 BAGS OF BARK TO 1 YARD



**SG06 BUFF**  
1 BAG PER 2 YARDS



**HONEY BUFF**  
ADD 1 BAG OF BUFF TO 1 YARD



**GOLDEN BUFF**  
ADD 2 BAGS OF BUFF TO 1 YARD



**MUSTARD BUFF**  
ADD 3 BAGS OF BUFF TO 1 YARD



**SG07 GRAY**  
1 BAG PER 2 YARDS



**GAUNTLET GRAY**  
ADD 1 BAG OF GRAY TO 1 YARD



**FOX GRAY**  
ADD 2 BAGS OF GRAY TO 1 YARD



**HEMATITE GRAY**  
ADD 3 BAGS OF GRAY TO 1 YARD

Many things can affect the appearance of color. For best color matching results, a representative job-site sample should be cast using materials from the project location.

Colors shown on this chart represent formulations using medium gray cement. Variations can be expected due to differences in cement, aggregates and method of application.